

Mill

Specs

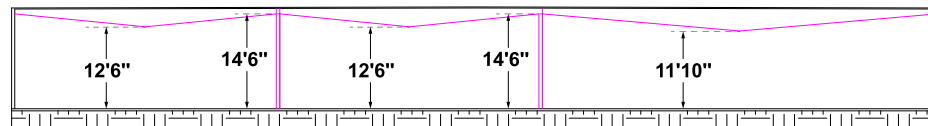
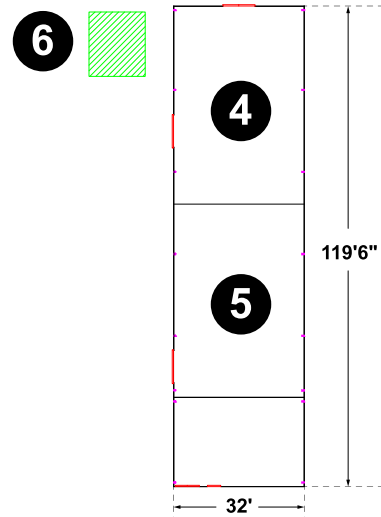
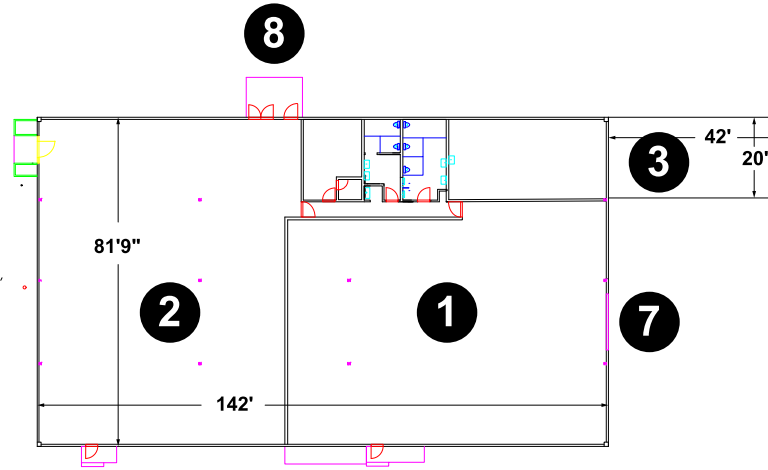
Mill 1 - 6,500 sq ft
 Mill 2 - 5,700 sq ft
 Elephant door 10' x 10'
 600 AMPS Power each

Features

Office
 Entire area HVAC
 On grade loading
 Restrooms

Key Notes

- 1) Mill 1
- 2) Mill 2
- 3) Extra storage Mill 1
- 4) Set Dec 1 1,900sq ft
- 5) Set Dec 2 1,900sq ft
- 6) DWP pad
- 7) 10' x 10' Roll up door
- 8) 10' x 10' Sliding door



Clear height view of mill

