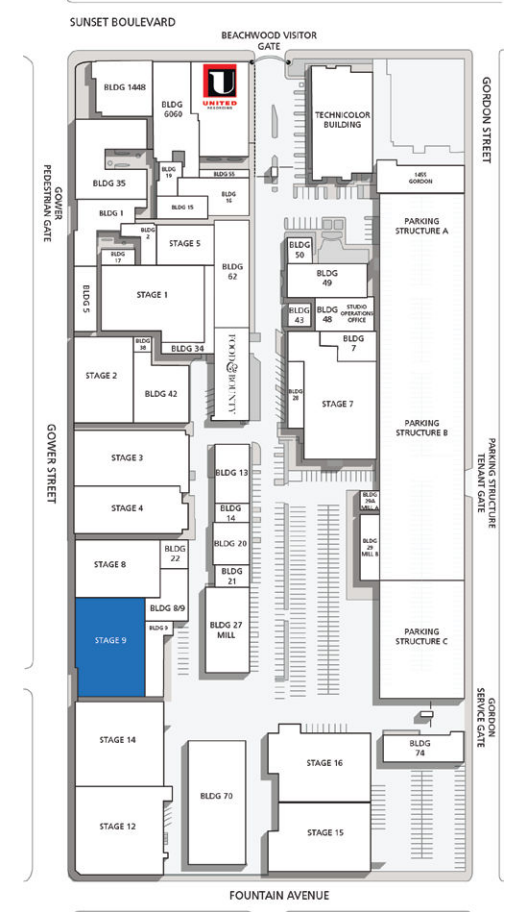
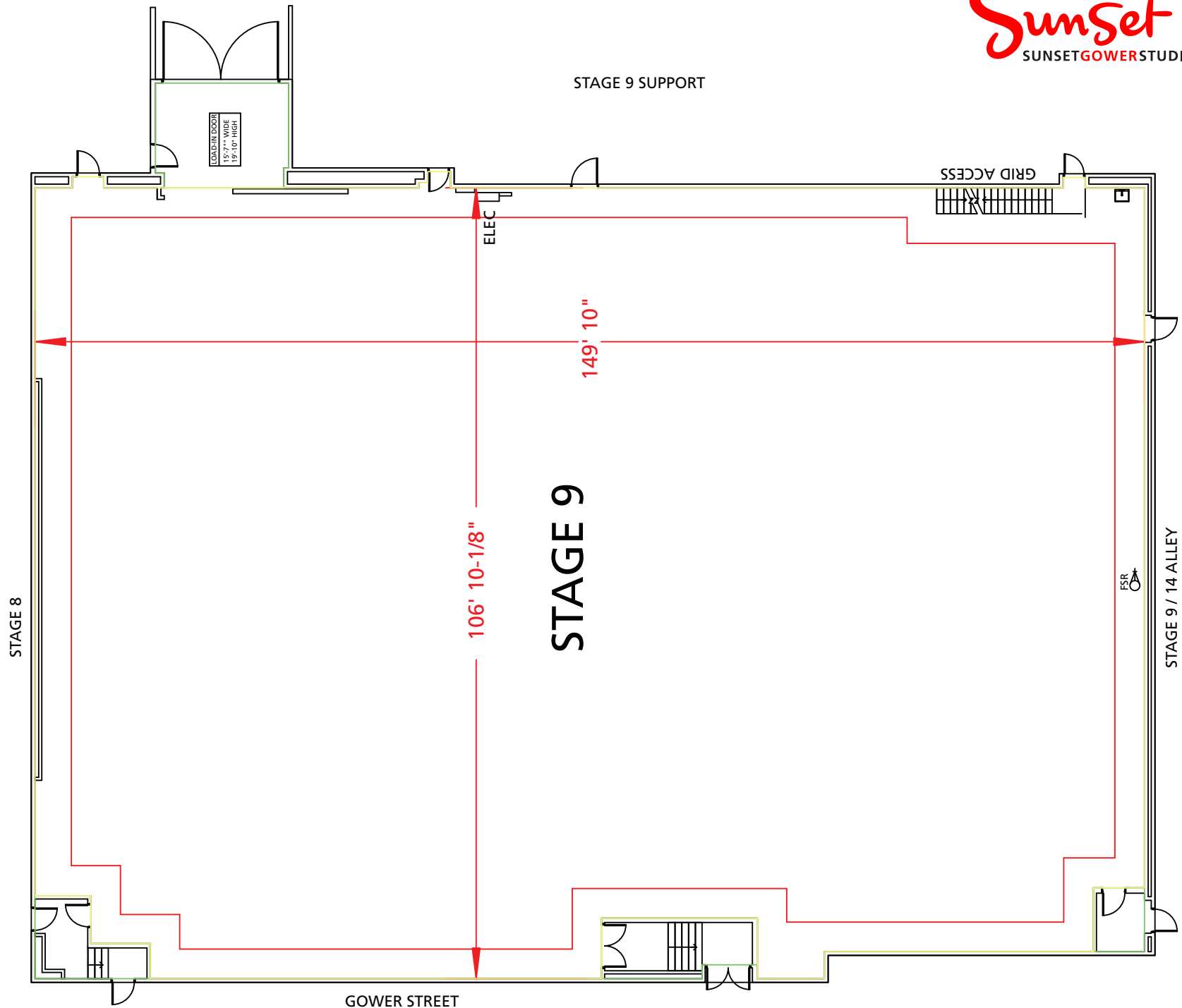


Stage 9



Width	Length	Height (Perms)	Total Stage Square Footage	Floor Type	Door (WxH)
106'7"	149'10"	34'8"	16,275	Wood	15'5" x 19'11"



Stage Specifications: Stage 9



Stage Specifications - (Dimensions Include 4' Fire Lane)

Width – 106' 7"
Length – 149' 10"
Height (Perms) – 34' 8"
Total Square Footage – 16,275
Floor Type – Wood
Elephant Door (W X H) – 15' 5" X 19' 11"

Support Space- (Available On Stage)

Support 8/9: 4 Support Rooms and 1 Kitchen (Not Including Support 9)

Heavy Equipment

Stage Management to authorize

Electric Service

Production Power - 120/208 800 Amp Per Phase Bus Bar, 4800 Amp Total Standard. Additional 2400 Amps Available
240 Volts - No
480 Volts - No
Tech Power - Available
Power In Grid – Available

HVAC

(2) 33 Ton (Nominal) Cooling Only Package Unit
33 Ton Cooling / Heat Package Unit
Redlight Control - Yes
Ventilation - Yes
Heating – Yes

Stage Extras

Hose Bib - No
Gas - No
Drain - Yes
Compressed Air - No
Wireless Internet – Available
Phone – Available
Fax – Available