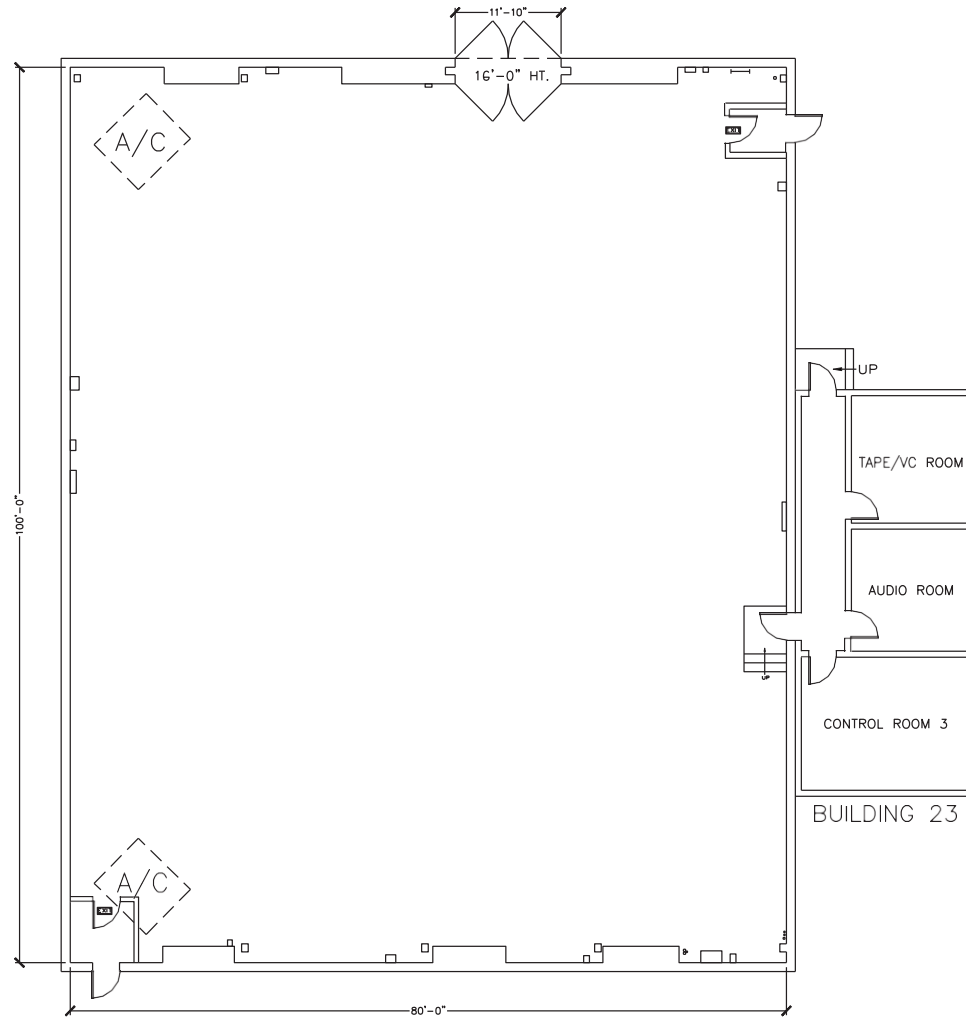


Stage 7



Width	Length	Height (Perms)	Total Stage Square Footage	Floor Type	Door (WxH)
100'	80'	24'	8,338 SF	Wood	11'10" X 16'

Stage Specifications: Stage 7



Stage Specifications

Width – 100'
Length – 80'
Height (Perms) – 24'

Total Square Footage – 8,338 SF
Floor – Wood over slab
Elephant Door (W X H) – 11'10" x 16'

Additional Info

Audience Rated – 250 + crew of 49
Drive-In – Yes
Cat Walks – Yes

Support Space

Control Room Connectivity – Yes; SMPTE fiber & audio break-outs/tech power
Dressing Rooms, Wardrobe, and Hair + Make Up rooms are available in adjacent buildings

Heavy Equipment

Stage Management to authorize

Electric Service

Production Power – 1- Switchable Buss Bar 120/208 Volt @ 3 phase 800 Amps per Phase 2400 amp Total
Tech Power – Available
Power In Grid – No

HVAC

80 tons
Redlight Control – Yes
Ventilation – No
Heating – Yes

Stage Extras

Hose Bib – Yes
Gas – Yes
Drain – No
Compressed Air – Yes
Wireless Internet – Available
Phone – Available
Fax – Available