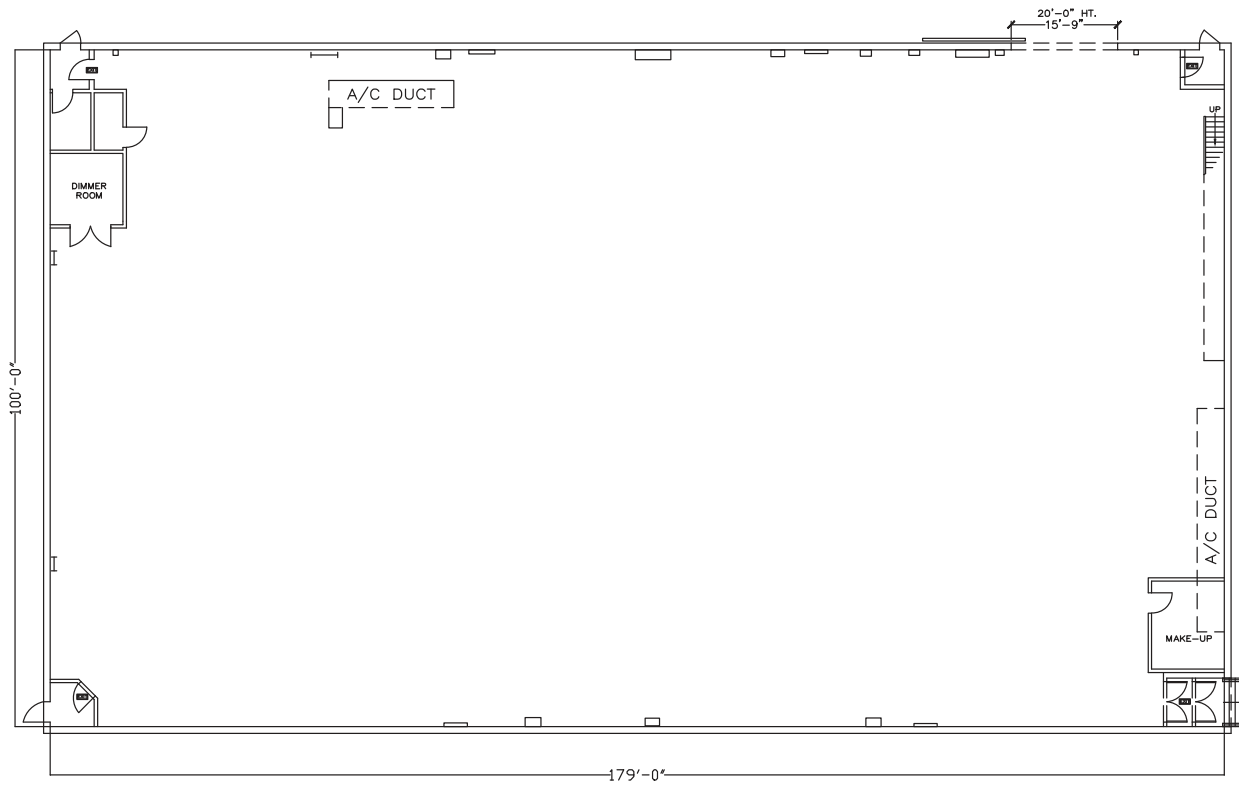


Stage 4



Width	Length	Height (Perms)	Total Stage Square Footage	Floor Type	Door (WxH)
101'	174'	35'	18,562	Wood	15'3" X 20'

Stage Specifications: Stage 4



Stage Specifications

Width – 101'
Length – 174'
Height (Perms) – 35'
Total Square Footage – 18,562 SF
Floor – Raised wood
Elephant Door (W X H) – 15'3" X 20'

Additional Info

Audience Rated – 250 + crew of 49; A2 rating
Drive-In – Yes
Cat Walks – Yes

Support Space

Control Room Connectivity – Yes; SMPTE fiber & audio break-outs/tech power
Kitchen on stage with fridge, stove
Dressing Rooms, Wardrobe, and Hair + Make Up rooms are available in adjacent buildings

Heavy Equipment

Stage Management to authorize

Electric Service

Production Power – 2- Switched Buss Bars 120/208 V @ 3 phase 800 amps per phase 4800 amps total
240 Volts – No
480 Volts – No
Tech Power – Available

HVAC

160 tons
Redlight Control – Yes
Ventilation – Yes
Heating – Yes

Stage Extras

Hose Bib – Yes
Gas – Yes
Drain – No
Compressed Air – Yes
Wireless Internet – Available
Phone – Available
Fax – Available