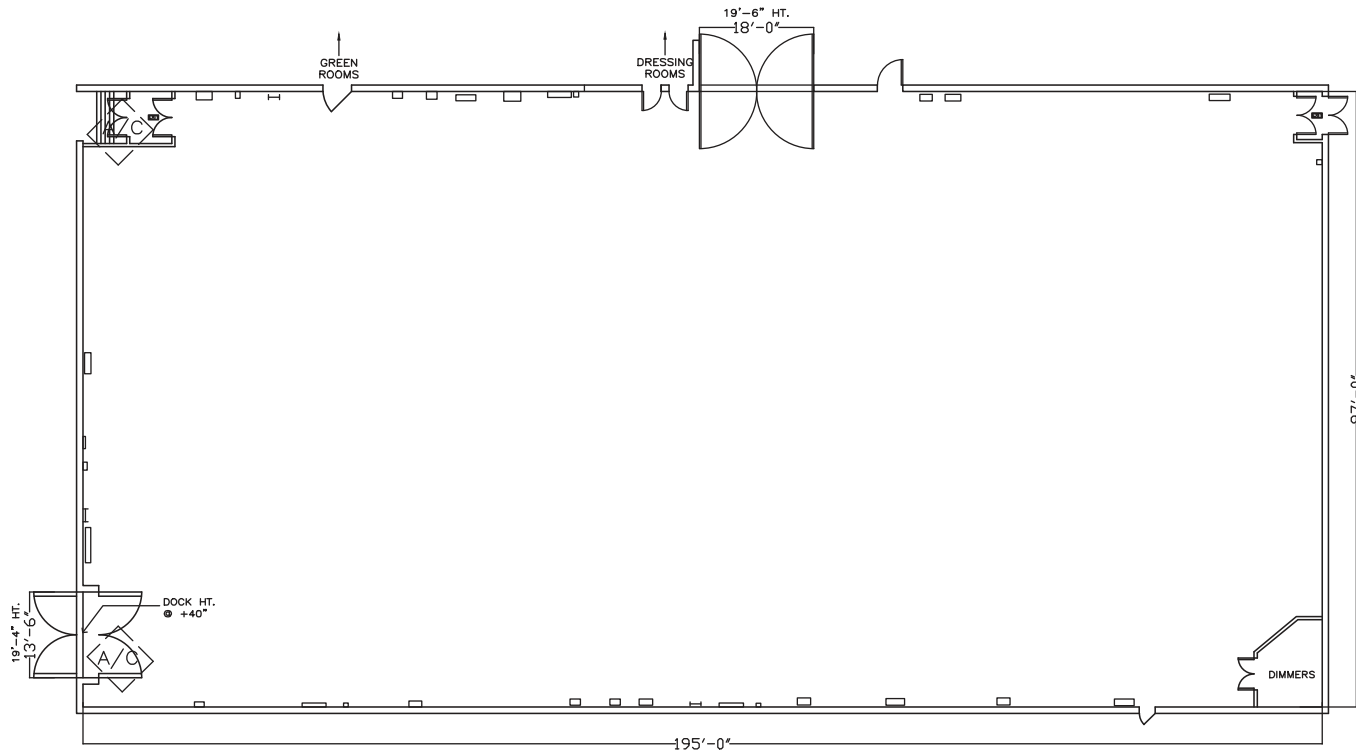


Stage 3/8



Width	Length	Height (Perms)	Total Stage Square Footage	Floor Type	Door (WxH)
97'	195'	30'	19,900	Wood	17'6" X19'6"

Stage Specifications: Stage 3/8



Stage Specifications

Width – 97'
Length – 195'
Height (Perms) – 30'
Total Square Footage – 19,900 SF
Floor – Raised Wood
Elephant Door (W X H) – 17'6" X 19'6" (Two elephant doors, one with dock)

Additional Info

Audience Rated – 250 + crew of 49; A2 rating.
999 Occupancy with permit.
Drive-In – Yes
Cat Walks – Yes

Support Space

Control Room Connectivity – Yes; SMPTE fiber & audio break-outs/tech power

10 star dressing rooms with full bath-rooms, green room,
large make-up and hair room, wardrobe room

Heavy Equipment

Stage Management to authorize

Electric Service

Production Power – 2 - switched buss bars 120/208 volts @ 3 phase 800 amps per phase 4800 amps total
240 Volts – No
480 Volts – No
Tech Power – Available
Power In Grid – Available

HVAC

160 tons Redlight Control – Yes
Ventilation – Yes
Heating – Yes

Stage Extras

Hose Bib – Yes
Gas – Yes
Drain – No
Compressed Air – Yes
Wireless Internet – Available
Phone – Available
Fax – Available