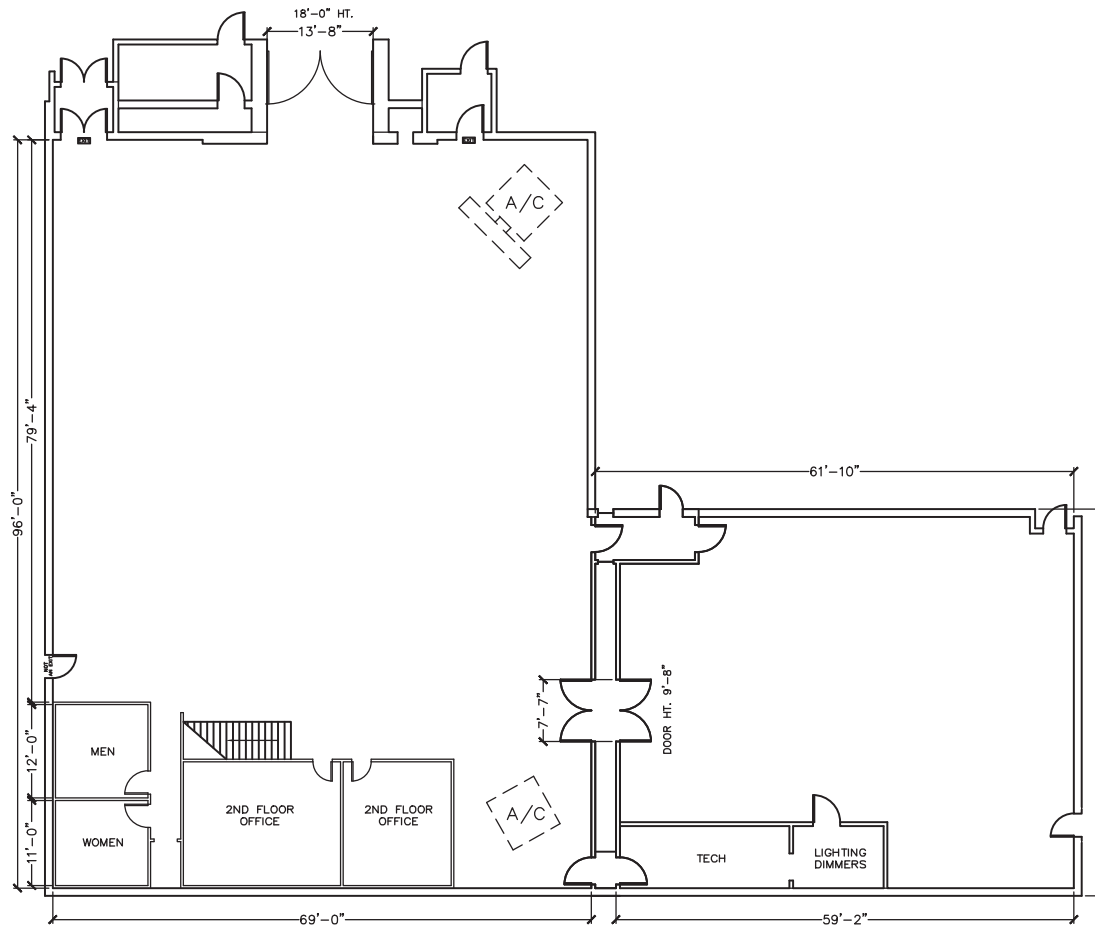


Stage 2 & 2A



2

Width	Length	Height (Perms)	Total Stage Square Footage	Floor Type	Door (WxH)
69'	79'4"	24'	6,711	Wood	13'8" X 18'

2A

Width	Length	Height (Perms)	Total Stage Square Footage	Floor Type	Door (WxH)
60'	50'	20'	2,828	Wood	7'7" X 9'8"

Stage Specifications: Stage 2 & 2A

Stage Specifications (Stage 2)

Width – 69'
 Length – 79'4"
 Height (Perms) – 24'
 Total Square Footage – 6,711 SF
 Floor – Wood over slab
 Elephant Door (W X H) – 13'8" X 18'

Stage Specifications (Stage 2A)

Width – 60'
 Length – 50'
 Height (Perms) – 20'
 Total Square Footage – 2,828 SF
 Floor – Wood over slab
 Elephant Door (W X H) – 7'7" X 9'8"
 Ventilation - Yes

Additional Info

Audience Rated – 250 + crew of 49; A3 rating
 Drive-In – Yes
 Cat Walks – Yes

Support Space

Control Room Connectivity – Yes; SMPTE fiber & audio break-outs/tech power
 Kitchen on stage with fridge, stove
 Dressing Rooms, Wardrobe, and Hair + Make Up rooms are available in adjacent buildings

Heavy Equipment

Stage Management to authorize

Electric Service

Production Power – 2 switchable buss bars 120/208v @ 3 phase 800 amps per phase 4800 total amps
 240 Volts – No
 480 Volts – No
 Tech Power – Available
 Power In Grid – No

HVAC

80 tons
 Redlight Control – Yes
 Ventilation – No
 Heating – No

Stage Extras

Hose Bib – Yes
 Gas – Yes
 Drain – No
 Compressed Air – Yes
 Wireless Internet – Available
 Phone – Available
 Fax – Available