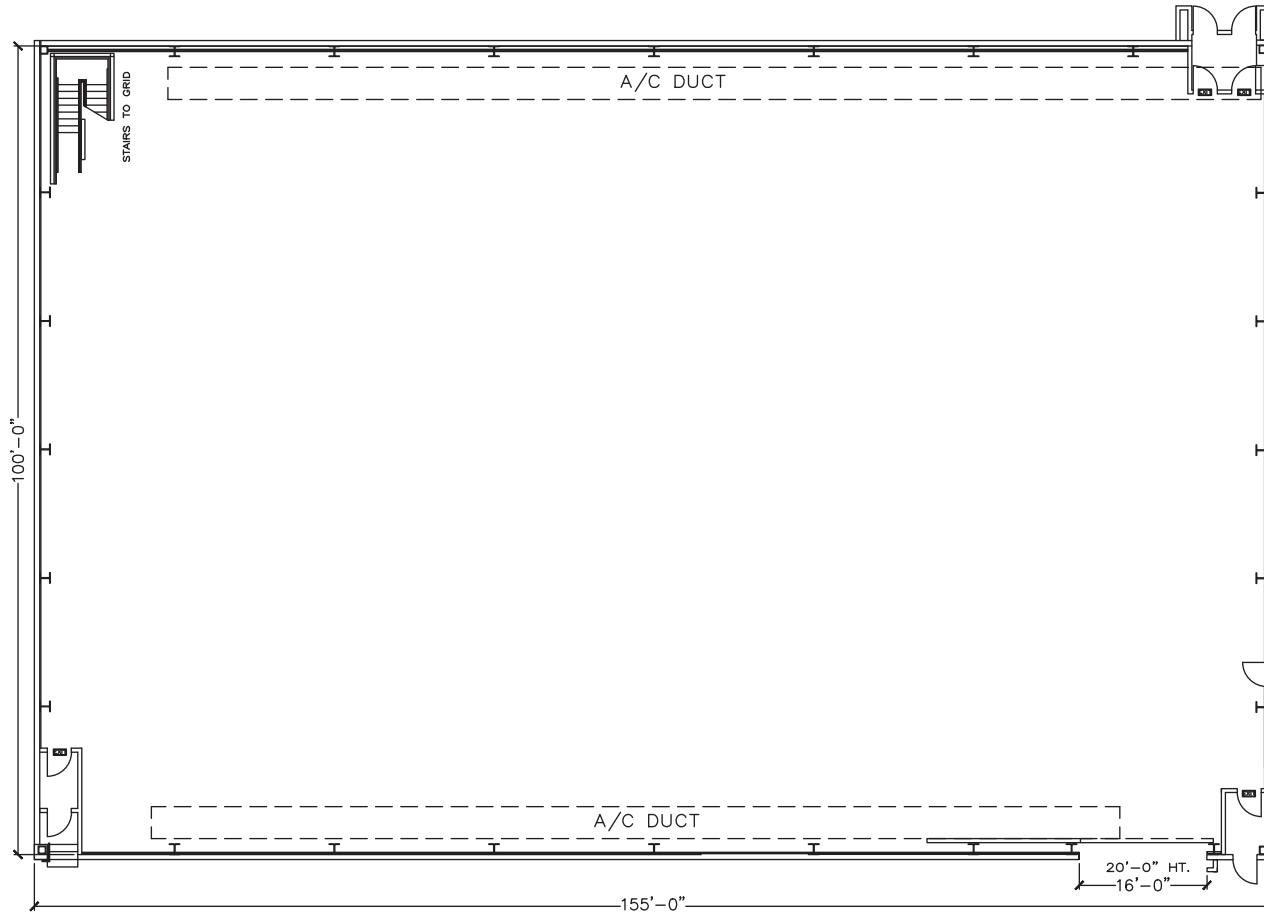


# Stage 10



Width	Length	Height (Perms)	Total Stage Square Footage	Floor Type	Door (WxH)
100'	155'	35'	15,822	Wood	16' X 20'

## Stage Specifications: Stage 10

---

### Stage Specifications

Width – 100'  
Length – 155'  
Height (Perms) – 35'  
Total Square Footage – 15,822 SF  
Floor – Wood over slab  
Elephant Door (W X H) – 16' X 20'

### Additional Info

Audience Rated – 250 + crew  
Drive-In – Yes  
Cat Walks – Yes

### Support Space

Control Room Connectivity – Yes; video capable, isolated tech power  
Dressing Rooms, Wardrobe, and Hair + Make Up rooms are available in adjacent buildings

### Heavy Equipment

Stage Management to authorize

### Electric Service

Production Power – 3 - switchable buss bars, 120/208 volts @ 3 phase, 800 amps per phase 7200 total amps  
Tech Power – Available  
Power In Grid – Available

### HVAC

160 tons  
Redlight Control – Yes  
Ventilation – Yes  
Heating – Yes

### Stage Extras

Hose Bib – Yes  
Gas – Yes  
Drain – Yes  
Compressed Air – Yes  
Wireless Internet – Available  
Phone – Available  
Fax – Available