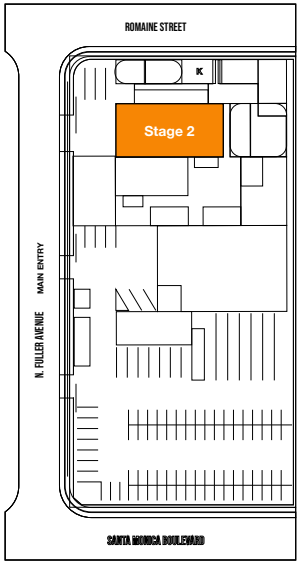
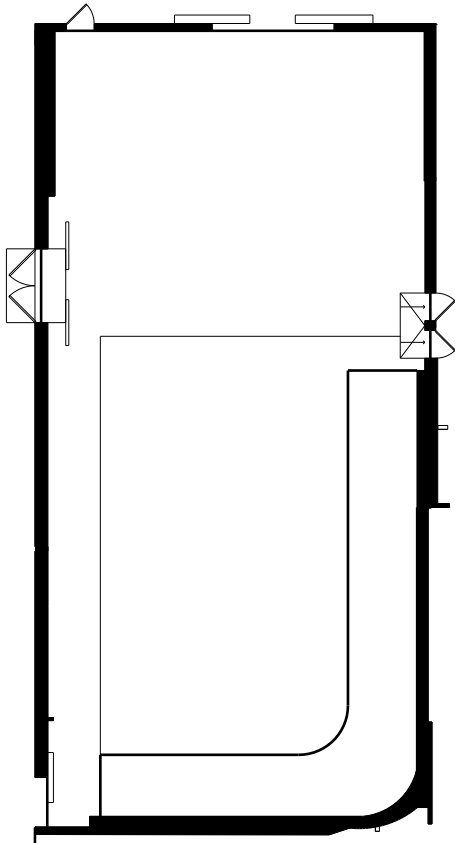


STAGE 2



WIDTH	LENGTH	HEIGHT (PERMS)	TOTAL STAGE SQUARE FOOTAGE	FLOOR TYPE	DOOR (WxH)
86'4"	40'1"	19'5"	4,651	CEMENT & CYC	13'2" X 15'2"

*Dimensions are for overall stage size and do not take into account stage irregularities. Production company representative should verify dimensions for particular applications.

STAGE SPECIFICATION - STAGE 2

STAGE SPECIFICATIONS

Width - 86'4"

Length - 40'1"

Height - 19'5"

Fire Lane - 4'

Total Square Footage - 4,651

Elephant Door - 13'2" x 15'2"

Cyc - 2 Wall (45'4" x 26'10" x 17')

Occupancy Load - 300

POWER

Power/Amps - 120-208V / 1,200A

Disconnects Per Stage - 1

HVAC

HVAC - Fully Self Contained (22.5 ton cooling capacity)

Redlight Control - No

Flex Duct Connection - No

Exhaust Fans - Yes

STAGE EXTRAS

Bell & Light System - Yes

Ramp Loading - No

Motorized Elephant Door - No

Pipe Grid PSF - 3.5

Water Available Outside - Yes

of Parking Spaces - 20

*Dimensions are for overall stage size and do not take into account stage irregularities. Production company representative should verify dimensions for particular applications.