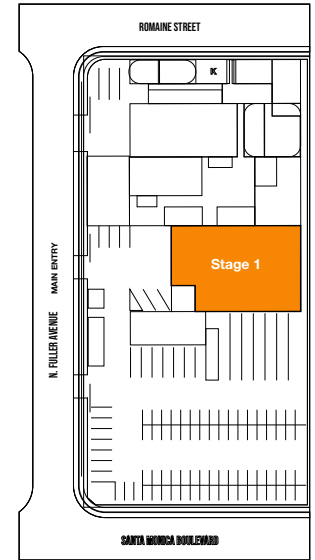
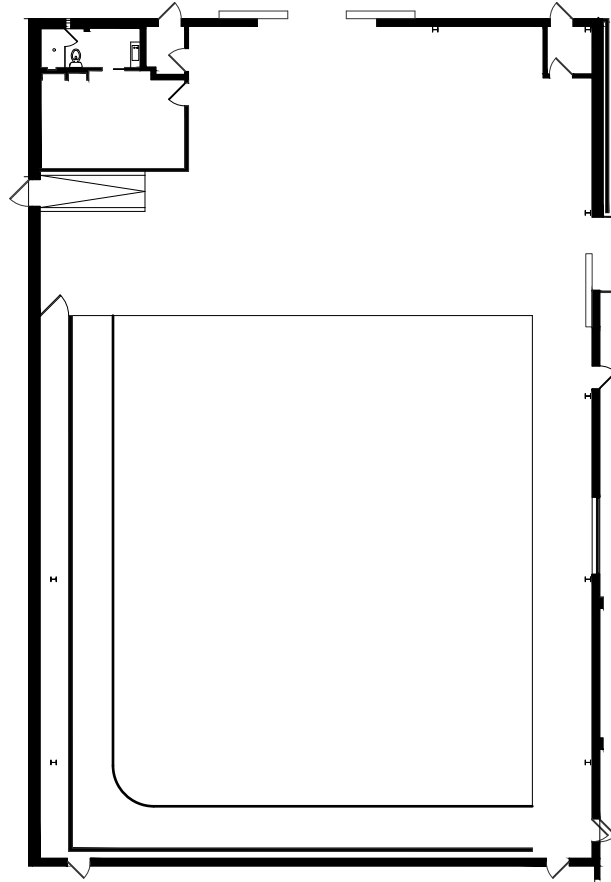


STAGE 1



WIDTH	LENGTH	HEIGHT (PERMS)	TOTAL STAGE SQUARE FOOTAGE	FLOOR TYPE	DOOR (WxH)
75'	110'	21'	9,823	CEMENT & CYC	15' X 18'

*Dimensions are for overall stage size and do not take into account stage irregularities. Production company representative should verify dimensions for particular applications.

STAGE SPECIFICATION - STAGE 1

STAGE SPECIFICATIONS

Width - 75'

Length - 110'

Height - 21'

Fire Lane - 4'

Total Square Footage - 9,823

Elephant Door - 15' x 16'

Cyc - 2 Wall (60'x70'x19')

Occupancy Load - 650

POWER

Power/Amps - 120-208V / 2,400A

Disconnects Per Stage - 2

HVAC

HVAC - Fully Self Contained (40 ton cooling capacity)

Redlight Control - No

Flex Duct Connection - No

Exhaust Fans - Yes

STAGE EXTRAS

Bell & Light System - Yes

Ramp Loading - No

Motorized Elephant Door - No

Pipe Grid PSF - 3.5

Water Available Outside - Yes

of Parking Spaces - 20

*Dimensions are for overall stage size and do not take into account stage irregularities. Production company representative should verify dimensions for particular applications.