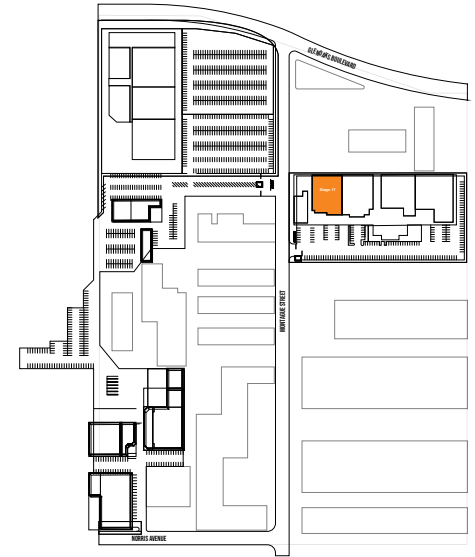
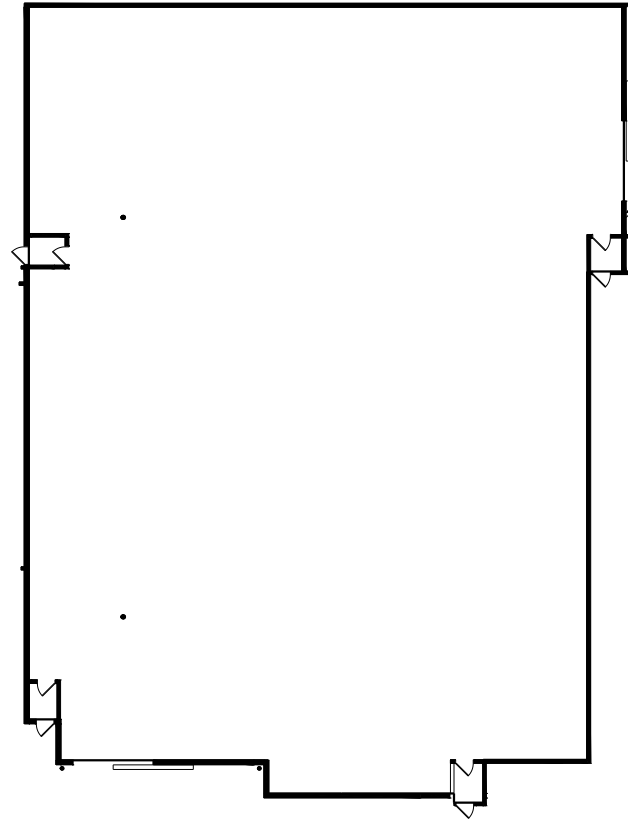


# QUIXOTE

By *Sunset Studios*

## STAGE 17



WIDTH	LENGTH	HEIGHT (PERMS)	TOTAL STAGE SQUARE FOOTAGE	FLOOR TYPE	DOOR (WxH)
111'11"	157'5"	24'	22,638	CEMENT	16' X 16'

\*Dimensions are for overall stage size and do not take into account stage irregularities. Production company representative should verify dimensions for particular applications.

**Sales@SunsetStudios.com • (323) 860-8100**  
Film/TV Production

**Bookings@Quixote.com • (323) 850-0414**  
Commercial/Music Video Production



# STAGE SPECIFICATION - STAGE 17

## STAGE SPECIFICATIONS

WIDTH - 111'11"

LENGTH - 157'5"

HEIGHT - 24'

FIRE LANE - 4'

TOTAL SQUARE FOOTAGE - 22,638

ELEPHANT DOOR - 16' X 16'

OCCUPANCY LOAD - 500

## POWER

POWER/AMPS - 120-208V / 4,800A

DISCONNECTS PER STAGE - 4

## HVAC

HVAC - FULLY SELF CONTAINED (75 TON COOLING CAPACITY)

REDLIGHT CONTROL - YES

BELL & LIGHT SYSTEM - YES

FLEX DUCT CONNECTION - YES

EXHAUST FANS - YES

## STAGE EXTRAS

RAMP LOADING - YES

MOTORIZED ELEPHANT DOOR - YES

PIPE GRID PSF - 15

WATER AVAILABLE OUTSIDE - YES

# OF PARKING SPACES - 40

\*Dimensions are for overall stage size and do not take into account stage irregularities. Production company representative should verify dimensions for particular applications.

Sales@SunsetStudios.com • (323) 860-8100  
Film/TV Production

Bookings@Quixote.com • (323) 850-0414  
Commercial/Music Video Production