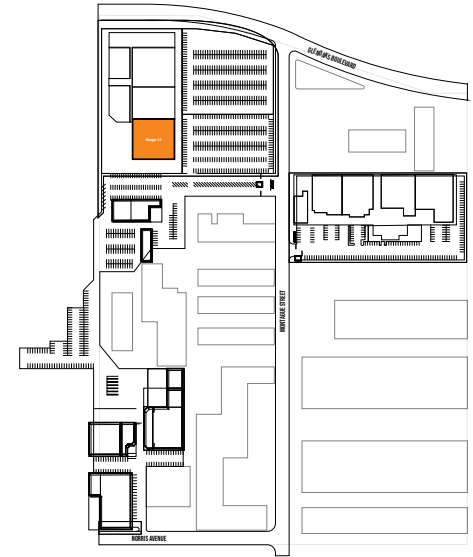
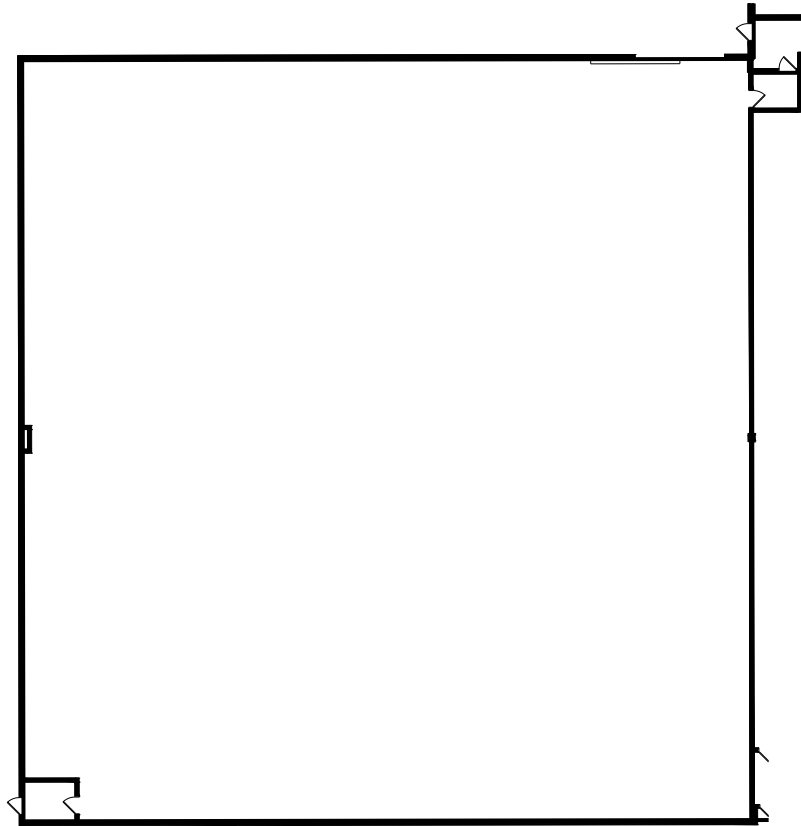


QUIXOTE

By *Sunset* Studios

STAGE 13



WIDTH	LENGTH	HEIGHT (PERMS)	TOTAL STAGE SQUARE FOOTAGE	FLOOR TYPE	DOOR (WxH)
137'	121'	31'	19,626	CEMENT	16' X 16'

*Dimensions are for overall stage size and do not take into account stage irregularities. Production company representative should verify dimensions for particular applications.

Sales@SunsetStudios.com • (323) 860-8100
Film/TV Production

Bookings@Quixote.com • (323) 850-0414
Commercial/Music Video Production



STAGE SPECIFICATION - STAGE 13

STAGE SPECIFICATIONS

WIDTH - 137'

LENGTH - 121'

HEIGHT - 31'

FIRE LANE - 4'

TOTAL SQUARE FOOTAGE - 19,626

ELEPHANT DOOR - 16' X 16'

OCCUPANCY LOAD - 490

POWER

POWER/AMPS - 120-208V / 4,800A

DISCONNECTS PER STAGE - 4

HVAC

HVAC - FULLY SELF CONTAINED (100 TON COOLING CAPACITY)

REDLIGHT CONTROL - NO

BELL & LIGHT SYSTEM - YES

FLEX DUCT CONNECTION - NO

EXHAUST FANS - YES

STAGE EXTRAS

RAMP LOADING - YES

MOTORIZED ELEPHANT DOOR - YES

PIPE GRID PSF - 20

WATER AVAILABLE OUTSIDE - YES

OF PARKING SPACES - 51

*Dimensions are for overall stage size and do not take into account stage irregularities. Production company representative should verify dimensions for particular applications.

Sales@SunsetStudios.com • (323) 860-8100

Film/TV Production

Bookings@Quixote.com • (323) 850-0414

Commercial/Music Video Production