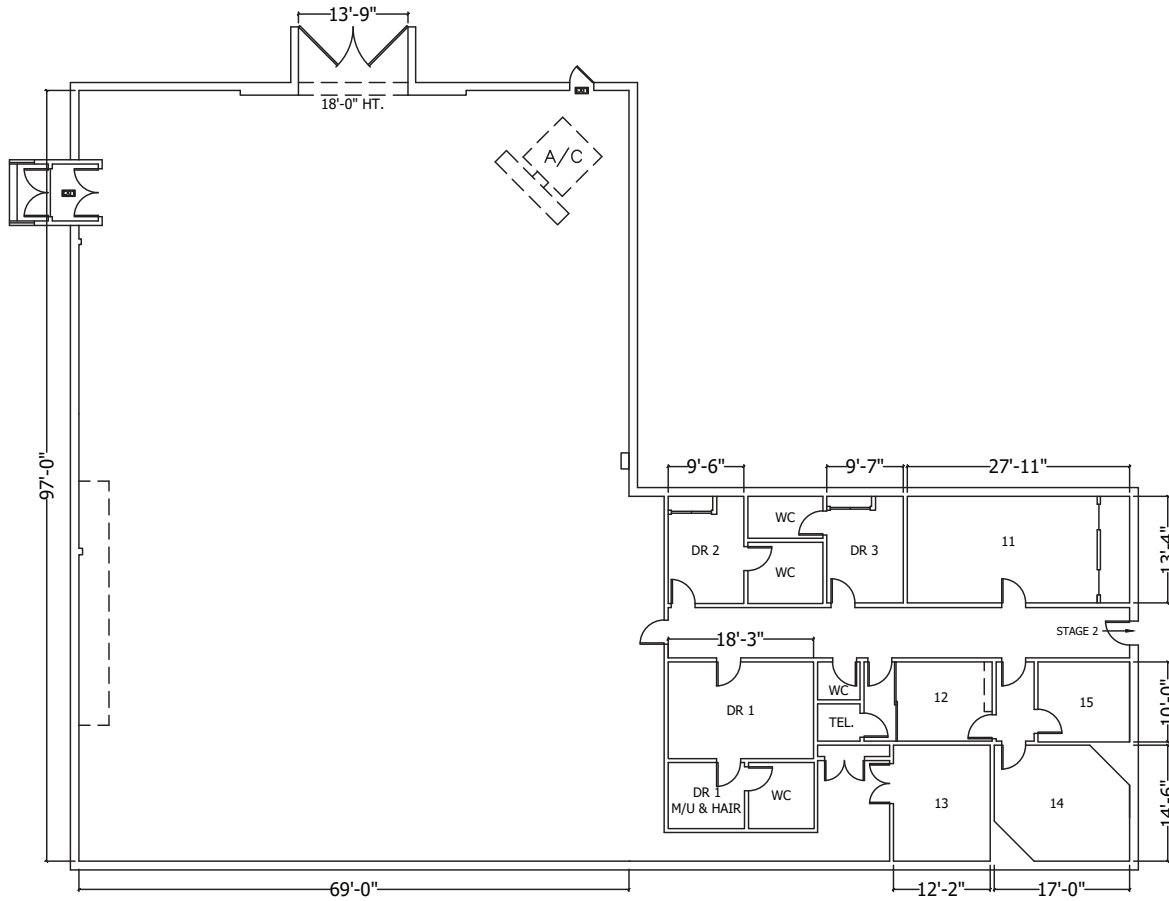


# Stage 1



Width	Length	Height (Perms)	Total Stage Square Footage	Floor Type	Door (WxH)
70'	97'	24'	7,513	Wood	13'9" X 18'

\*Dimensions are for overall stage size and do not take into account stage irregularities. Production company representative should verify dimensions for particular applications.

# Stage Specifications: Stage 1

---

## Stage Specifications

Width – 70'  
Length – 97'  
Height (Perms) – 24'  
Total Square Footage – 7,513 SF  
Floor – Wood over slab  
Elephant Door (W X H) – 13'9" X 18'

## Additional Info

Audience Rated – 250 + crew of 49; A3 rating  
Drive-In – Yes  
Cat Walks – Yes

## Support Space

Control Room Connectivity – Yes; SMPTE fiber & audio break-outs/tech power  
Dressing Rooms, Wardrobe, and Hair + Make Up rooms are available in adjacent buildings

## Heavy Equipment – (Authorized Lifts)

32' Scissor – 3246ES  
45electric  
5k forklift

## Electric Service

Production Power – 2 - switched buss bar 120/208 v, 3 phase 800 amps per phase 4800 total  
amps 120/208 800 Amp Per Phase  
240 Volts – No  
480 Volts – No  
Tech Power – Available  
Power In Grid – No

## HVAC

80 tons  
Redlight Control – Yes  
Ventilation – No  
Heating – Yes

## Stage Extras

Hose Bib – Yes  
Gas – Yes  
Drain – No  
Compressed Air – Yes  
Wireless Internet – Available  
Phone – Available  
Fax – Available