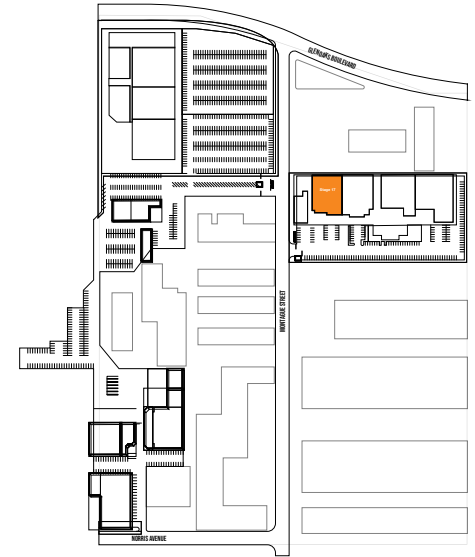
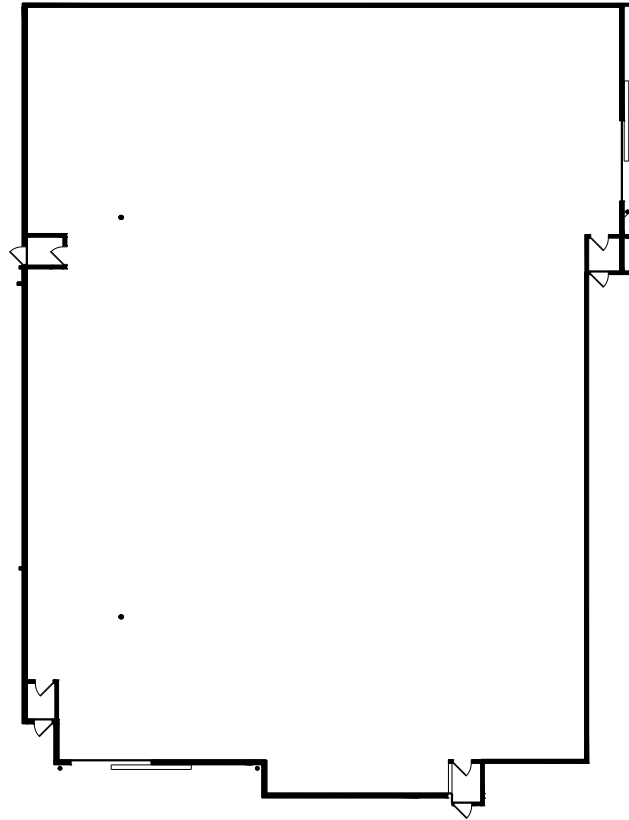


QUIXOTE

By *Sunset Studios*

STAGE 17



WIDTH	LENGTH	HEIGHT (PERMS)	TOTAL STAGE SQUARE FOOTAGE	FLOOR TYPE	DOOR (WxH)
111'11"	157'5"	24'	18,188	CEMENT	16' X 16'

*Dimensions are for overall stage size and do not take into account stage irregularities. Production company representative should verify dimensions for particular applications.

Sales@Quixote.com • (323) 851-0414

STAGE SPECIFICATION - STAGE 17

STAGE SPECIFICATIONS

WIDTH - 111'11"

LENGTH - 157'5"

HEIGHT - 24'

FIRE LANE - 4'

TOTAL SQUARE FOOTAGE - 18,188

ELEPHANT DOOR - 16' X 16'

OCCUPANCY LOAD - 500

POWER

POWER/AMPS - 120-208V / 4,800A

DISCONNECTS PER STAGE - 4

HVAC

HVAC - FULLY SELF CONTAINED (75 TON COOLING CAPACITY)

REDLIGHT CONTROL - YES

BELL & LIGHT SYSTEM - YES

FLEX DUCT CONNECTION - YES

EXHAUST FANS - YES

STAGE EXTRAS

RAMP LOADING - YES

MOTORIZED ELEPHANT DOOR - YES

PIPE GRID PSF - 15

WATER AVAILABLE OUTSIDE - YES

OF PARKING SPACES - 40

*Dimensions are for overall stage size and do not take into account stage irregularities. Production company representative should verify dimensions for particular applications.