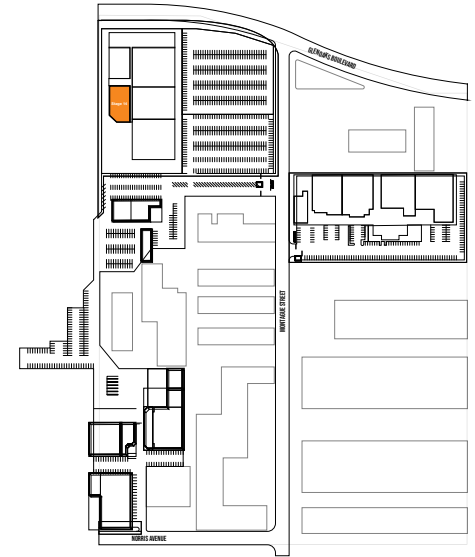
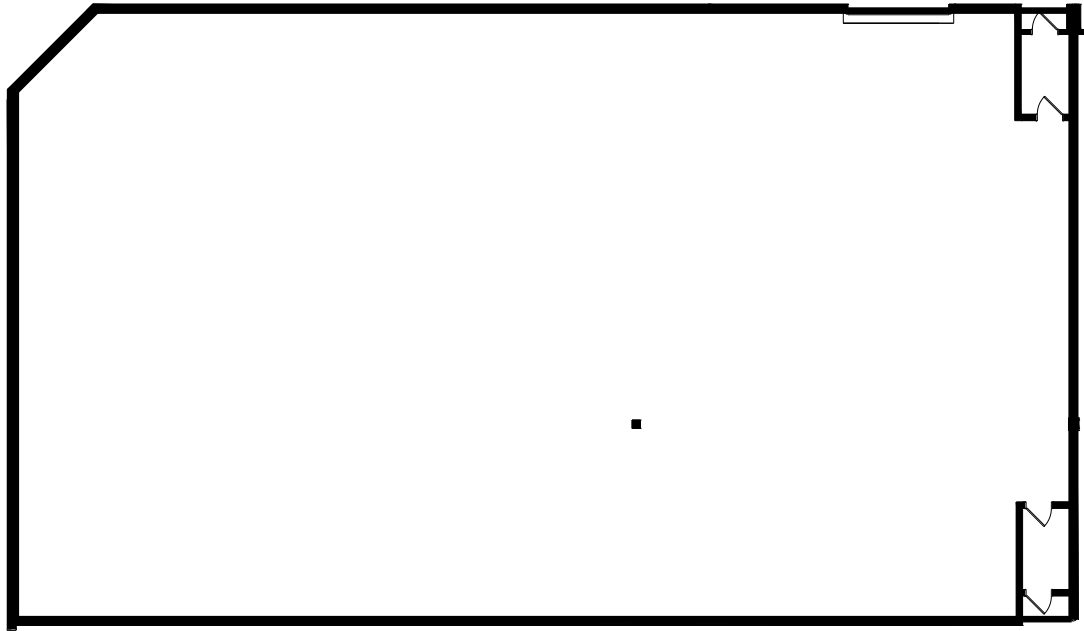


# STAGE 14



WIDTH	LENGTH	HEIGHT (PERMS)	TOTAL STAGE SQUARE FOOTAGE	FLOOR TYPE	DOOR (WxH)
72'	125'	21'5"	8,950	CEMENT	12' X 14'

\*Dimensions are for overall stage size and do not take into account stage irregularities. Production company representative should verify dimensions for particular applications.

# STAGE SPECIFICATION - STAGE 14

## STAGE SPECIFICATIONS

WIDTH - 72'

LENGTH - 125'

HEIGHT - 21' 5"

FIRE LANE - 4'

TOTAL SQUARE FOOTAGE - 8,950

ELEPHANT DOOR - 12' X 14'

OCCUPANCY LOAD - 240

## POWER

POWER/AMPS - 120-208V / 2,400A

DISCONNECTS PER STAGE - 2

## HVAC

HVAC - FULLY SELF CONTAINED (60 TON COOLING CAPACITY)

REDLIGHT CONTROL - NO

BELL & LIGHT SYSTEM - YES

FLEX DUCT CONNECTION - NO

EXHAUST FANS - YES

## STAGE EXTRAS

RAMP LOADING - NO

MOTORIZED ELEPHANT DOOR - YES

PIPE GRID PSF - 20

WATER AVAILABLE OUTSIDE - NO

# OF PARKING SPACES - 17

\*Dimensions are for overall stage size and do not take into account stage irregularities. Production company representative should verify dimensions for particular applications.