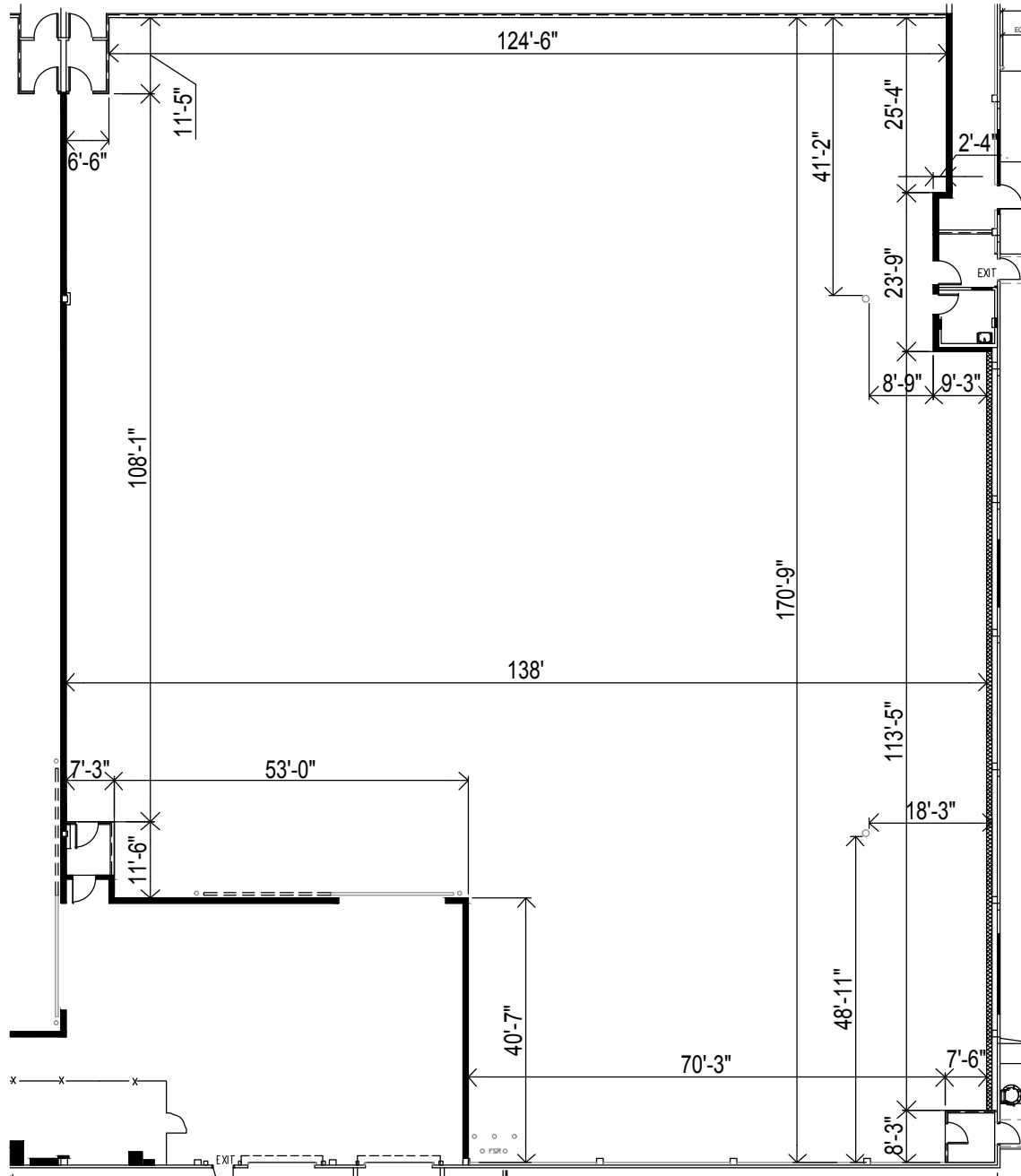


# Stage 20



## Specs

- 21,130 SF
- 131' 10" x 171' 5" x 24'
- 24' to Grid
- 4800 Amps
- 75 Tons HVAC
- Elephant Door – 16' x 16'

## Features

- Red Light HVAC Controls
- Bell & Red Light System
- Motorized Elephant Door
- Flex Duct Connections
- Exhaust Fans
- Dock Height Loading Bay
- Loading Ramp
- 51 Dedicated Parking Spaces  
(Additional Parking Available)
- WiFi Available

