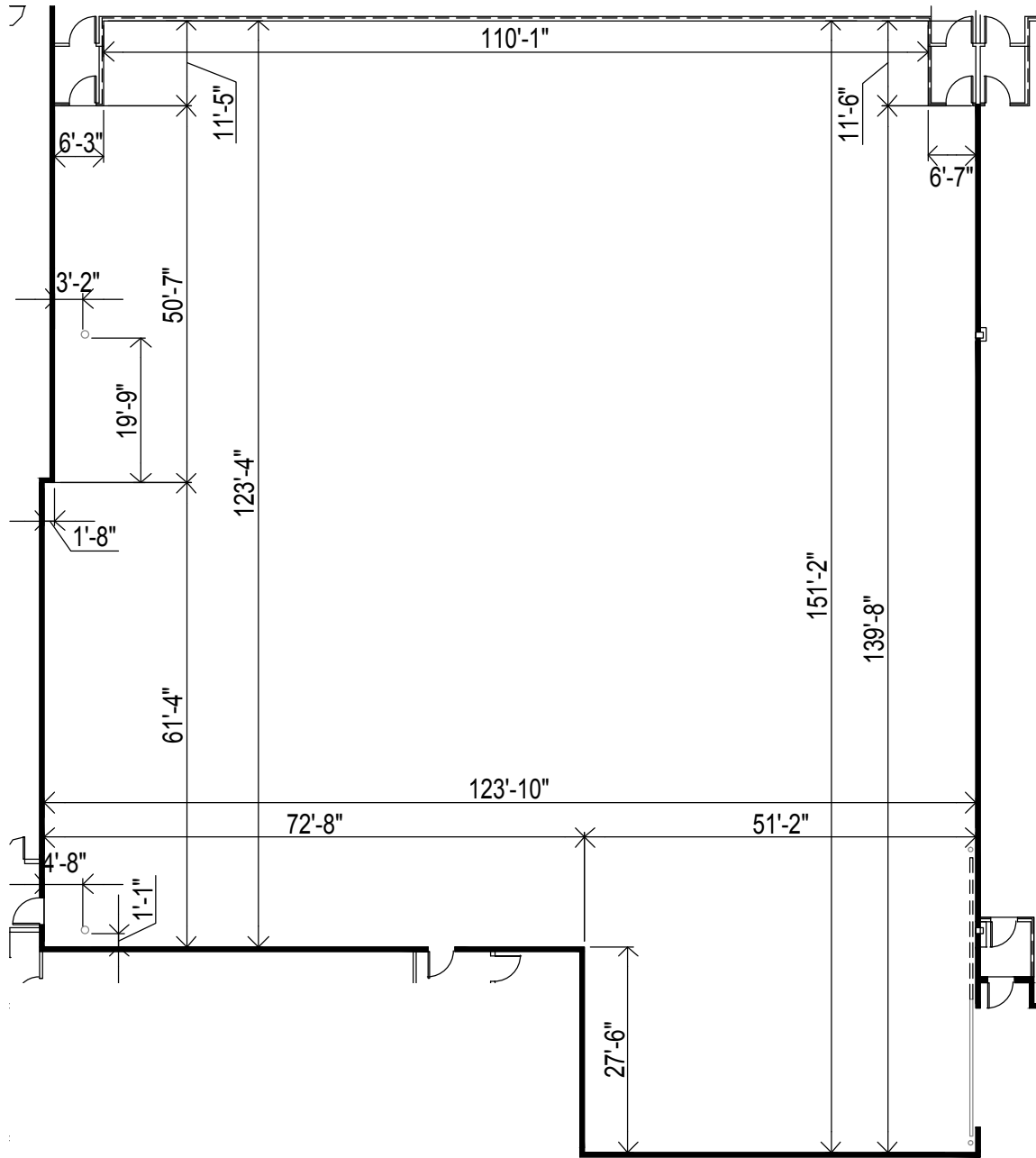


Stage 19



Specs

- 16,956 SF
- 123' 8" x 151' 10" x 24'
- 24' to Grid
- 4800 Amps
- 75 Tons HVAC
- Elephant Door – 16' x 16'
- 1200 Amps Basecamp
- 4 Power Drops
- 15PSF Pipe Grid
- 6 Ethernet Jacks

Features

- Red Light HVAC Controls
- Bell & Red Light System
- Motorized Elephant Door
- Flex Duct Connections
- Exhaust Fans
- Dock Height Loading Bay
- Loading Ramp
- 44 Dedicated Parking Spaces
(Additional Parking Available)
- WiFi Available

